



THE AG GROUP OF COMPANIES

113 Robinson Street
Sarnia ON N7T 8E9
ag-goc.ca
519-491-0405
info@askguy.ca

LED Module



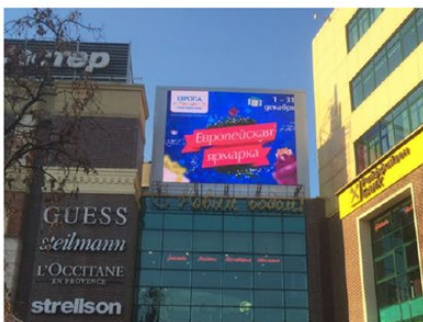
LED spacing	P10 outdoor
LED configuration	SMD2727, 3in1
LED module size	320 x 320 mm
LED module resolution	32 x 32 pixels
Driving IC	SUM2016
Driving method	constant current
Scanning Method	1/2 scanning

Cabinet



Cabinet size	2,560(W) x 960(H) mm
Cabinet Material	Steel
Cabinet resolution	256 x 96 pixels
Power supply	MEANWELL® LRS-350-5
Maintenance type	Front & Rear Service
Cabinet weight	56 kg/m ²

LED video board



LED display size	2,560(W) x 960(H) mm
Screen size in Feet	8.40(W) x 3.15(H)ft
Physical resolution	256 x 96 pixels
Cabinet arrangement	1 wide x 1 high = 1pcs
Pixel density	10,000 pixels/m ²
Brightness	>=6,500 cd/m ²
Refresh rate	>=1920 Hz
Max. power consmpt.	700W/SQ.M
Avg. power consmpt.	250W/SQ.M
Amp. Required	26A(110V)/13A(220V)
Min. viewing distance	10 Mtrs
Best viewing angle	140°(H)/120°(V)
Grey scale	65,536 levels
Processing depth	16 bits
Brightness control	256 levels
Ingress protection	IP65
Input voltage	220V±10%; 110V±10%
Working temperature	-20°C - +60°C
Storage humidity	10-90%RH
MTBF	>5,000 Hrs
Lifetime	100,000 Hrs

